

# State of Wyoming Corner Record

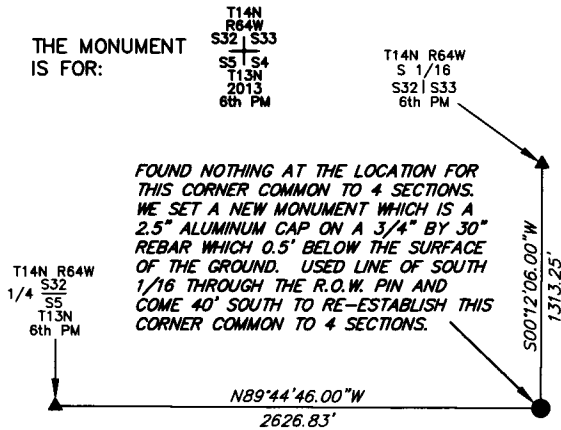
*CORNER PERPETUATION AND FILING ACT.*

Regulations of the Board of Registration for Professional Engineers and Land Surveyors.)

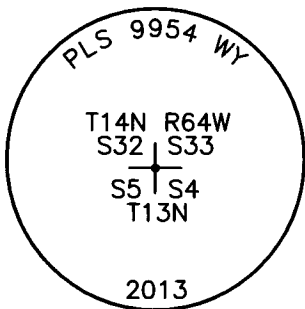
Reverse side of this form may be used if more space is needed.

Record of original survey and citation of source of historic information (if corner is lost or obliterated). Description of corner monumentation evidence found and/or monument and accessories established to perpetuate the location of this corner. Sketch of relative location of monument, accessories, and reference points with course and distance to adjacent corner(s) (if determined in this survey). Method and rationale for reestablishment of lost or obliterated corner.

NOTE:  
LINES SHOWN ARE BETWEEN  
MONUMENTS AND MAY OR  
MAY NOT BE SECTION OR  
SECTION SUBDIVISION LINES.



FOUND NOTHING AT THE LOCATION FOR THIS CORNER COMMON TO 4 SECTIONS. WE SET A NEW MONUMENT WHICH IS A 2.5\"/>



THE MONUMENT IS MARKED

Date of Field Work: 12/27/2013 Office Reference: \_\_\_\_\_

**CORNER MONUMENT SYMBOLS**

- RECORD IS FOR THIS CORNER MONUMENT.
- ▲ A RELATED CORNER OR WC MONUMENT.

SCALE 1"=1000'  
(EXCEPT IN TRIVIAL CASES)  
BEARINGS ARE RELATED TO WGS 84 WITH GPS OBSERVATIONS  
DRAWN BY: SM  
P.C. D. SHANKS  
COUNTY: LARAMIE



REC #: 658193  
RECORDED 4/6/2015 AT 2:29 PM BK# 2437 PG# 912  
Debra K. Lathrop. CLERK OF LARAMIE COUNTY. WY PAGE 1 OF 1

**CROSS INDEX DIAGRAM**

A	1	2	3	4	5	6	7	8	9	10	11	12	13	14	15	16	17	18	19	20	21	22	23	24	25	A
B																										B
C			6			5				4					3						2					C
D																										D
E																										E
F																										F
G						7				8					9						10					G
H																										H
J																										J
K																										K
L										18					17						16					L
M																										M
N																										N
O																										O
P										19					20						21					P
Q																										Q
R																										R
S																										S
T																										T
U																										U
V																										V
W																										W
X																										X
Y																										Y
Z																										Z

Firm/Agency, Address

UELS, LLC

85 South 200 East

Vernal, Utah 84078

Telephone Number: 435-789-1017

This corner record was prepared by me or under my direction and supervision.

SEAL & SIGNATURE



CORNER COMMON TO 4 SECTIONS

Corner Name: SOUTHEAST CORNER OF SECTION 32 Section: 32 T 14N R 64W ; 6TH P.M. Cross Index No.: Z-9

SBRPEPLS/PLSW: March 1994 (CLCR...SJA)